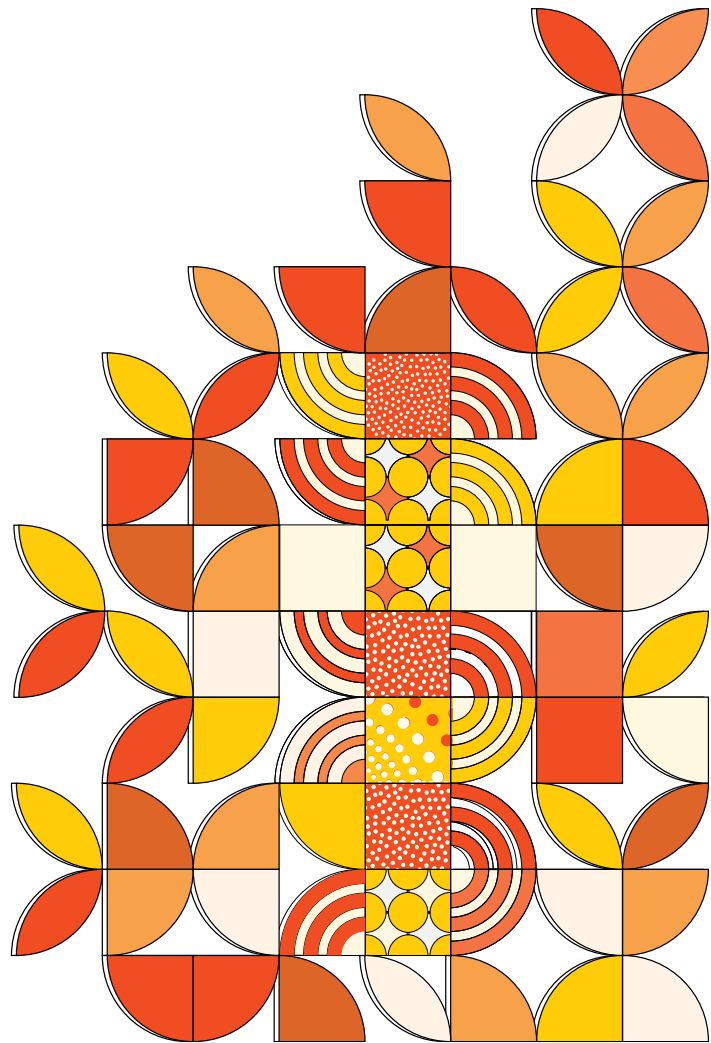


# Academic Honesty and Integrity Policy



## SECTION 1

### Purpose

1. This policy describes the Institute of Health & Management's (IHM's) principles for promoting, supporting, and upholding high standards of academic integrity. It outlines how IHM will deter academic misconduct through educative approaches that articulate clearly IHM's expectations of staff and students.

### Scope

2. This policy applies to all IHM staff and students.
3. This policy is concerned with all breaches of academic integrity, which includes (but is not limited to):
  - a. Plagiarism
  - b. Contract cheating
  - c. Examination cheating
  - d. Duplicate submission
  - e. Impersonation
  - f. Academic fraud
  - g. Solicitation and promoting the breach of academic integrity
  - h. Collusion
  - i. Non-compliance with examination instructions/requirements
  - j. Academic integrity and AI

### Definitions

4. The following definitions have their meaning as implied out below:
  - a. **Academic fraud** - A form of academic dishonesty that occurs when a person makes false representation to gain unfair advantage.
  - b. **Academic integrity** - Relates to honest and responsible scholarship through students creating and expressing their ideas, acknowledging all sources of information, completing all work, e.g., assessment tasks independently and/or, acknowledging any collaboration.
  - c. **AI hallucination** - is the result when a generative AI system provides a response that is not factual.
  - d. **Artificial Intelligence (AI)** - is the ability of a digital computer or computer-controlled robot to perform tasks commonly associated with intelligent beings.<sup>1</sup>
  - e. **Artificial intelligence literacy** - is a set of competencies that enables individuals to critically evaluate AI technologies; communicate and collaborate effectively with AI; and use AI as a tool online, at home, and in the workplace.<sup>2</sup>
  - f. **Assessment** - The process of attributing value to the outcome of a task a student undertakes.
  - g. **Assessment task** - Includes, but is not limited to essays, tests, examinations, laboratory, field, and clinical work, workplace learning tasks, portfolios, projects, productions, presentations, performances, and online activities.

---

<sup>1</sup> Definition adapted from Copeland, 2023 (Link: <https://www.britannica.com/technology/artificial-intelligence>, assessed 04 May 2023)

<sup>2</sup> Definition adapted from Long, & Magerko, 2020 (Link: <https://dl.acm.org/doi/10.1145/3313831.3376727>, assessed on 04 May 2023)

- h. **Breach of copyright** - Is defined as the commission of an act that is disallowed, either explicitly or implicitly, by the Copyright Act 1968 (the Act) and subsequent amendments.
- i. **ChatGPT (Generative Pre-trained Transformer)** - is a large language model developed by OpenAI, designed to engage in natural language conversations with users. It uses deep learning algorithms to understand and respond to a wide variety of questions and prompts in a conversational manner.
- j. **Cheating** - Describes an act of academic misconduct through which a student attempts to gain unfair advantage in admission to a course or in an assessment task.
- k. **Contract cheating** - Includes paid and unpaid arrangements made through a third party, which includes friends/family allowing another person or using artificial intelligence to complete part or all of an assessment or examination.
- l. **Copyright** - Copyright in Australia is governed by the Australian Copyright Act 1968 (the Act). This legislation gives the owner of the copyright in literary, dramatic, musical, and artistic works, sound recordings, films, and broadcasts exclusive rights to use those works. The types of uses include the right to reproduce/copy a work, publish, perform in public, and/or communicate the work to the public via electronic means - including making it available online or sending it via email. Permission needs to be obtained from the owner of copyright.
- m. **Duplicate submission** - Resubmitting or largely reusing previously assessed work.
- n. **Examination cheating** - Includes any of the following examples: Accessing/obtaining an advance copy of an examination paper unless otherwise authorised, e.g., a 'seen' paper, communicating with or copying from, another person/s during an examination, or bringing into, or receiving unauthorized material/information during an examination.
- o. **Generative Artificial Intelligence** - Generative Artificial Intelligence (GAI) is an AI model capable of generating text, images, code, video, and audio. Large Language Models (LLMs) such as ChatGPT and Copilot produce text from large datasets in response to text prompts
- p. **Hallucinated references** - are fake references that are generated by generative AI language models, and that are made up of constituent parts (e.g., authors, journal titles, etc.) taken from actual references.
- q. **Impersonation** - Pretending to be another student and completing an assessment task/exam on their behalf.
- r. **Prevention of plagiarism and collusion** - Refer to the assessment task procedures/processes, including administration and marking, that prevent or minimize plagiarism and collusion.
- s. **Solicitation** - Occurs when a student or external agency requests, offers, encourages, induces, or advertises for another individual/student to contract, commission, pay, procure, or complete on their behalf, assessment tasks or other items that are likely to result in their use for cheating, misrepresentation and/or plagiarism. A student who willingly assists another to circumvent the purpose of assessment through solicitation, cheating, misrepresentation, or plagiarism (for example by willingly sharing their work, giving them access to their work or, advertising the availability of their work or someone else's work) is also breaching academic integrity and may be subject to disciplinary action.

### Suite Documents

- 5. This Policy is linked to the following Procedure:
  - a. Academic Honesty and Integrity Procedure
  - b. See also the Associated Information listed in the 'Related Internal Documents' in Section 3 below.

## **SECTION 2**

### **Policy**

#### **6. Principles**

- a. IHM uses clear, educative approaches to communicate the importance of academic integrity requirements to students and academic/teaching staff. Failure to maintain academic integrity is considered academic misconduct.
- b. IHM adopts preventative strategies that mitigate the risk of academic misconduct
- c. IHM is vigilant in detecting cases of academic misconduct.
- d. IHM manages academic misconduct consistently and transparently supporting students to avoid any reoccurrence.

#### **7. Copyright**

- a. IHM staff and students will not be indemnified by IHM for any criminal or civil case brought against them, shall their actions breach copyright laws.
- b. No staff member will instruct a student or subordinate to commit acts that breach copyright or contravene IHM policy. Consequently, IHM staff and students may be subject to disciplinary action.
- c. Breach of copyright is defined as the committing of an act that is disallowed, either explicitly or implicitly, by the Copyright Act (1968) and subsequent amendments.
- d. The copyright holder for works produced by staff as part of their employment is IHM unless an agreement to the contrary has been established.
- e. The copyright holder for all student work, including items submitted for assessment tasks, is the student. As such, the work cannot be published or shared without the student's prior informed consent.

#### **8. Use of citation and referencing in academic works**

- a. All papers, essays, and assignments will use a recognised citation style and will acknowledge all sources of data, ideas, concepts, phrases, quotes, and any other content in accordance with the Copyright Act (1968).
- b. Students and staff will be given access to information and advice that will allow them to do this and stay up to date with the latest versions of each citation style.
- c. As a rule, IHM documentation will be cited using the current APA referencing style, except where it is for a specific purpose or discipline for which another style is preferred.

#### **9. Contract Cheating**

- a. Contract cheating occurs when a student request someone else to produce all or part of an assessment task that is submitted as their work, including arrangements through a third party.
- b. Contract cheating is usually, but not exclusively, a paid arrangement.
- c. Third parties who are engaged to produce work may include:
  - essay writing services
  - friends, family, or other students
  - private tutors
  - copyediting services
  - agency websites; or

- providers located via 'reverse classifieds.
- d. Contract cheating is a serious breach of academic integrity and a form of fraud. It has implications for students' learning outcomes, the reputation of IHM, educational standards and credibility, and public safety, particularly in fields where a student's mastery of the material is essential to their ability to practice professionally.
- e. Contract cheating is academic misconduct and, in all instances, will be subject to provisions outlined in the IHM Student Misconduct Procedure. Penalties for proven contract cheating may include the full range of penalties outlined, including expulsion from IHM.

**10. Collusion**

- a. IHM staff and students are encouraged to discuss assignments and research activities, learn from each other, and proofread each other's work only to the extent of correcting grammatical errors and making suggestions.
- b. IHM staff and students will not attempt to publish, share, or submit for assessment of any work created by someone other than themselves whilst indicating that the work is their own.
- c. Where two or more people have contributed to a document or work, all contributors will be acknowledged as co-authors.
- d. Co-authorship is not permitted for documents or media submitted for assessment unless:
  - the option of doing so is explicitly offered in the assessment documentation; or
  - permission has been granted by the academic.

**11. The role of assessment design in the prevention of plagiarism and collusion**

- a. The type and design of assessment tasks plays an important role in the detection of academic misconduct, especially in the context of distance and/or online study.
- b. A variety of assessment methods will be used, including both written assignments and oral presentations, in each unit of study.
- c. Where a major discrepancy is apparent between a student's level of demonstrated knowledge and comprehension of different types of assignments, their work will be further examined, and the student may be asked questions to check their comprehension/knowledge to ensure that academic honesty and integrity has been maintained.

**12. Detection of plagiarism and collusion**

- a. IHM will take substantive measures to detect plagiarism and collusion.
- b. These measures will include the use of similarity check software such as Turnitin, as well as manual checking methods.
- c. Staff and student's regular communication will enable teaching staff to gain insights into the students' capability and comprehension.

**13. Artificial intelligence: Advice for students**

- a. The field of Generative Artificial Intelligence (GAI), also referred to as AI or generative AI, is developing quickly. AI chatbots like ChatGPT are a part of this category of technologies. It is crucial to be aware that employing AI for academic purposes may be prohibited or restricted based on the IHM Policy, procedure and guidelines.
- b. In contrast, there may be topics or tasks where using AI is recommended or even needed. Students shall comprehend how the use of these tools is referenced where the use of AI is allowed.
- c. A finding of academic misconduct may be made if AI is used in a manner that is contrary to the policies of IHM. To prevent compromising academic integrity, TEQSA advises all higher education

students to address expectations about AI with their institutions and to make sure they adhere to their guidelines.

- d. It is vital to be sure students comprehend the expectations for each assessment activity because regulations may vary across fields.
- e. Academic integrity is a critical aspect of academic work, and the increasing use of AI in research and education requires consideration of the implications for academic integrity.

**14. Principles of AI in Academic Integrity for Students**

- a. Respect for the ethical considerations involved in AI use in academic work.
- b. A commitment to transparency and accountability in the use of AI.
- c. A dedication to ensuring the integrity of academic work.
- d. Responsibility for the appropriate use of AI in academic work.

**15. Standards of AI in Academic Integrity for Students**

- a. Appropriate use of AI: Students shall use AI in academic work where it is appropriate and adds value to the research and education process.
- b. Ethical considerations: The use of AI in academic work shall adhere to ethical considerations including the privacy of individuals and protection of data.
- c. Transparency and accountability: The use of AI in academic work shall be transparent and accountable this includes documenting the use of AI and making this information available to relevant parties.
- d. Ensuring integrity of academic work: The use of AI in academic work shall not compromise the integrity of the work this includes ensuring that the results obtained from AI are accurate and that the analysis of the results is conducted appropriately.

**16. Expectations for students regarding AI in academic integrity**

- a. Students are expected to be familiar with the appropriate use of AI in academic work and the potential implications for academic integrity.
- b. Students shall only use AI in academic work where it is appropriate and adds value to the research our education process the use of AI shall not compromise the integrity after work.
- c. Students are expected to disclose the use of AI in their academic work where relevant including acknowledging any assistance provided by AI.
- d. Students are expected to uphold the principles of academic honesty including not plagiarising and falsifying academic work even when using AI.

**17. Consequences for violations of AI in academic integrity**

- a. Suspected violations of AI related academic integrity will be investigated by the institution.
- b. The investigation will be conducted according to established procedures and include a fair and impartial review of the evidence.
- c. Appropriate disciplinary action will be taken if a violation of AI related academic integrity is found which may include suspension expulsion and revocation of academic credentials.

**18. Uphold the Principles**

- a. By adhering to the principles, standards and expectations outlined in this policy students are expected to ensure the appropriate use of AI while maintaining the highest standards of academic integrity.

- b. It is the responsibility of all students to uphold these principles and commit to the responsible and ethical use of AI in academic work.

## 19. Australian Academic Integrity Network (AAIN) Generative Artificial Intelligence (GAI) Guidelines

- a. The benefits of generative AI to education include automatic generation of outlines and summaries, support for personalised learning, and writing feedback. Some challenges posed by using generative AI in higher education include:
  - The authentication of individual attainment for accreditation purposes.
  - Potential challenges to the principles of academic integrity.
  - The need for sustainable and adaptable responses to generative AI in learning, teaching and assessment and academic integrity policies and procedures.
  - Support for staff and students in understanding and using technology.

## Responsibilities and / or authorities

### 20. All staff and students included in the scope of this policy are expected to:

- a. Contribute, practice, promote and defend AI.
- b. Identify and report suspected cases of academic misconduct.
- c. Students are to ensure they do not engage in any activities that would violate IHM's policies and procedures or that would result in breaching AI.
- d. All staff will model AI in their teaching practice, educate students about AI, and report suspected cases of academic misconduct for investigation.
- e. Supervisors of students' research (including any research in coursework courses) will model research integrity, educate students and higher degree research candidates about research integrity, and report suspected breaches of research integrity for investigation.
- f. Students are expected to report suspected AI or misconduct to staff for further investigation; and this will deter others from committing academic misconduct.
- g. All IHM staff will promote and maintain academic integrity in supporting teaching staff and students.

## SECTION 3

### Associated Information

|                                   |  |
|-----------------------------------|--|
| <b>Related Internal Documents</b> | <ul style="list-style-type: none"> <li>• Academic Honesty and Integrity Procedure</li> <li>• Copyright Policy for Students</li> <li>• Course Design and Development Policy</li> <li>• Course Design and Development Policy</li> <li>• Learning and Teaching Policy</li> <li>• Learning and Teaching Procedure</li> <li>• Student Academic Progression Policy</li> <li>• Student Academic Progression Procedure</li> <li>• Student Assessment and Examination Policy</li> </ul> |
|-----------------------------------|--|

|  |   |
|--|---|
|  | <ul style="list-style-type: none"> <li>• Student Assessment and Examination Procedure</li> <li>• Student Code of Conduct</li> <li>• Student Code of Conduct Implementation Guidelines</li> <li>• Student Complaint and Appeals Policy</li> <li>• Student Complaint and Appeals Procedure</li> <li>• Student Misconduct Policy</li> <li>• Student Misconduct Procedure</li> <li>• Student Support Framework</li> <li>• Student Support Services Policy</li> <li>• Student Support Services Procedure</li> </ul>  |
| <b>Related Legislation, Standards, and Codes</b> | <ul style="list-style-type: none"> <li>• <a href="#">Tertiary Education and Quality Standards Agency Act 2011</a></li> <li>• <a href="https://www.teqsa.gov.au/students/artificial-intelligence-advice/students">https://www.teqsa.gov.au/students/artificial-intelligence-advice/students</a></li> <li>• <a href="https://www.open.edu.au/advice/insights/ethical-way-to-use-chatgpt-as-a-student">https://www.open.edu.au/advice/insights/ethical-way-to-use-chatgpt-as-a-student</a></li> <li>• <a href="https://www.teqsa.gov.au/sites/default/files/2023-04/aaingenerative-ai-guidelines.pdf">https://www.teqsa.gov.au/sites/default/files/2023-04/aaingenerative-ai-guidelines.pdf</a></li> <li>• <a href="#">Higher Education Standards Framework</a> (Threshold Standards) 2021</li> <li>• <a href="#">TEQSA Guidance Note: Academic integrity</a></li> </ul> |
| <b>Date Approved</b>                             | 15/05/2023  |
| <b>Date Endorsed</b>                             | 15/05/2023  |
| <b>Date of Effect</b>                            | 16/05/2023  |
| <b>Date of Next Review</b>                       | 30/12/2026  |
| <b>Approval Authority</b>                        | Academic Board (and then endorsed by Board of Directors)  |
| <b>Responsibility for Implementation</b>         | Academic Dean   |
| <b>Document Custodian</b>                        | Chair, Academic Board   |
| <b>Pinpoint Doc ID</b>                           | IHM – AHIP1   |



## Change History

| Version Control |                           | Version 4.0   |
|-----------------|---------------------------|---|
| Change Summary  | Date                      | Short description of the change, incl version number, changes, who considered, approved etc.  |
|                 | 07/01/2021<br>Version 3.0 | Version 3 amended as: <ul style="list-style-type: none"> <li>Added definitions</li> <li>Principles and contract cheating to the policy</li> <li>version 3, approved by Academic Board</li> </ul>                                |
|                 | 07/03/2021<br>Version 3.1 | Version 3.1 amended as follows: <ul style="list-style-type: none"> <li>Added Clause 13. c)</li> <li>Minor edits</li> <li>Approved by Academic Board on 26/04/2023</li> </ul>  |
|                 | 15/05/2023<br>Version 4.0 | Version 4.0 amended as follows: <ul style="list-style-type: none"> <li>Inclusion of definitions of AI</li> <li>Academic Integrity Procedure when using AI</li> <li>Related legislations, standards and codes updated</li> </ul> |